



Combined traffic volumes
 Total vehicles N/B = 1039
 HGV's / Buses = 37 (3.6%)

Combined traffic volumes
 Total vehicles S/B = 633
 HGV's / Buses = 30 (4.7%)

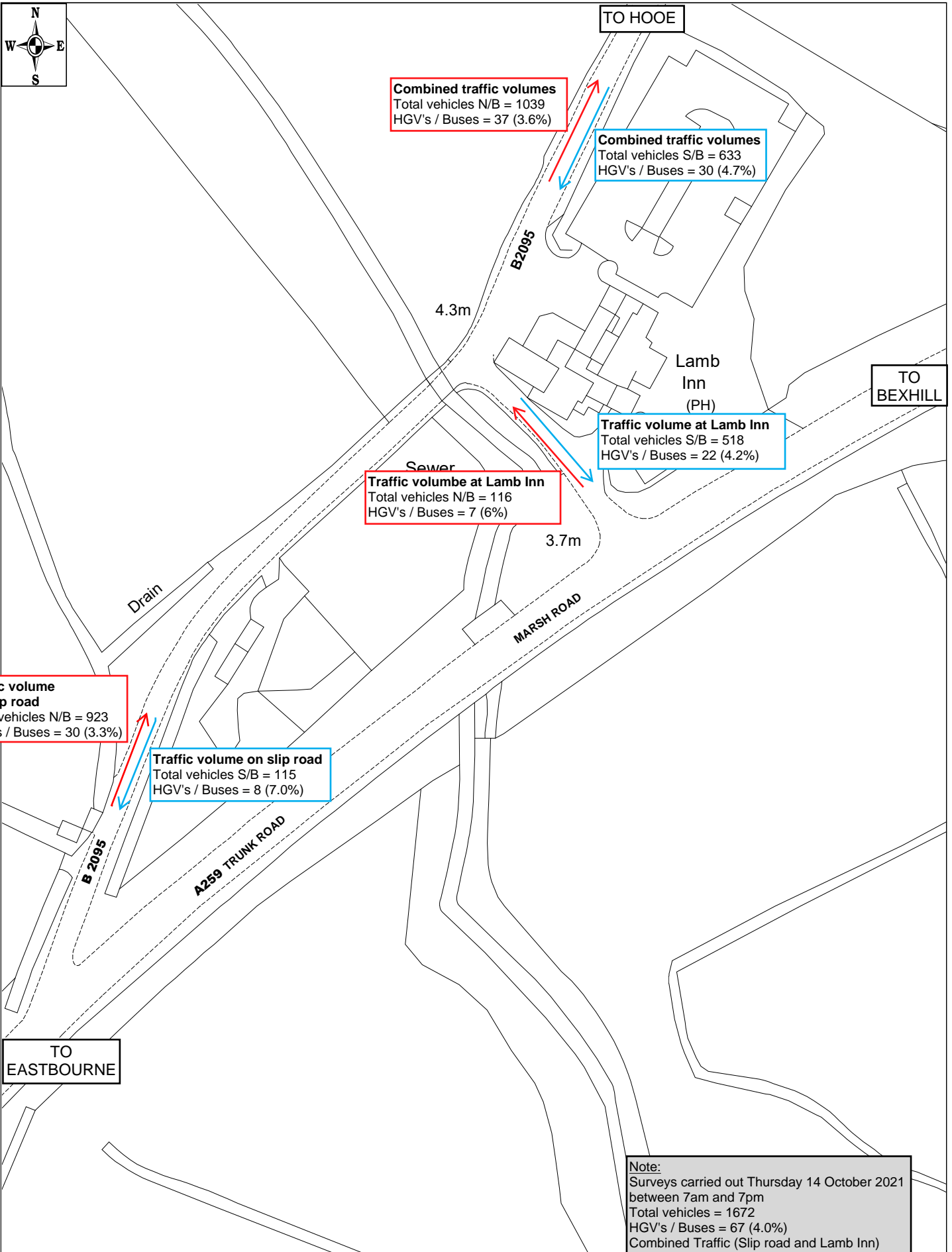
Traffic volume at Lamb Inn
 Total vehicles S/B = 518
 HGV's / Buses = 22 (4.2%)

Traffic volume at Lamb Inn
 Total vehicles N/B = 116
 HGV's / Buses = 7 (6%)

Traffic volume on slip road
 Total vehicles N/B = 923
 HGV's / Buses = 30 (3.3%)

Traffic volume on slip road
 Total vehicles S/B = 115
 HGV's / Buses = 8 (7.0%)

Note:
 Surveys carried out Thursday 14 October 2021
 between 7am and 7pm
 Total vehicles = 1672
 HGV's / Buses = 67 (4.0%)
 Combined Traffic (Slip road and Lamb Inn)



AccsMap version 6.2

A259 / B2095 Junctions

Traffic Volume

© Crown copyright. All rights reserved.
 East Sussex County Council.
 Licence No. 100019601. 2023

SCALE	1 : 1250
DATE	06/06/2023
DRAWING NO.	APPENDIX 7
DRAWN BY	MJH
ORIGINAL SIZE	A4